



Commercial Building For Lease



12251 S. Choctaw Drive - Baton Rouge, LA 70815

3,000 sq ft Commercial Property, zoned M-1 Lt Industrial

1,000 sq ft office + 2,000 sq ft warehouse

Lease Amount: \$1,000/month
(plus a one-time security deposit of \$1,000)

For additional information, contact Donna Phillips at 225-978-4108 or donna@acousticalspecialties.com

Acoustical Specialties & Supply, Inc.
Since 1975

Reception Area



Acoustical Specialties & Supply, Inc.
Since 1975

Offices and Hallway with storage closet and Restrooms



For additional information, contact Donna Phillips at 225-978-4108 or donna@acousticalspecialties.com

Acoustical Specialties & Supply, Inc.
Since 1975

Warehouse— 40' x 50' w/2 10' x 10' roll-up doors



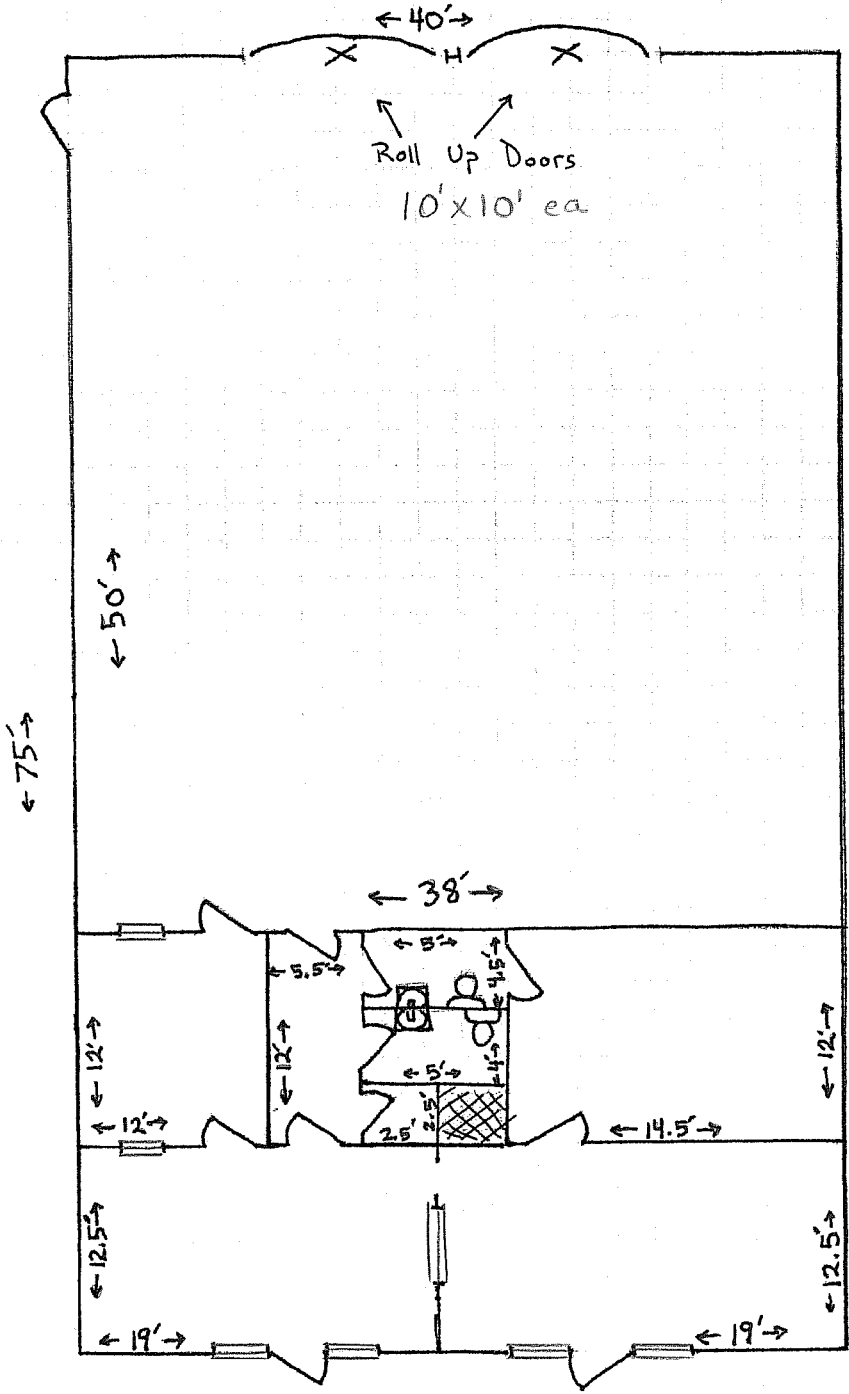
Note: In addition to the front parking lot, parking is also available behind the building.

For additional information, contact Donna Phillips at 225-978-4108 or donna@acousticalspecialties.com

MILLWORKS
 2027 North Harco Drive
 Baton Rouge, LA., 70815
 (225) 275-8853
 Fax (225) 273-1623

ACOUSTICAL
 Specialties & Supply, Inc.

Job Name: 12251 S Choctaw Dr	Sheet: 1 of 1
Calculated By: TW	Date: 9/2011



- | | |
|--|---|
| PRESIDENT - ALBERT S. GREENE, JR. - 275-3440 | CAULKS, SEALANTS, FRP PANELS, ADHESIVE & |
| CEILINGS & INSULATION - STEVE PHILLIPS - 275-3440 | FIRESTOPPING MATERIALS - GIL CROCHET - 275-3440 |
| FLOORING PRODUCTS - BILL BAKER/CLINT SCHAFFER - 272-9545 | AUTOMOTIVE TIRES & SERVICE - |
| BRICK, GLASSBLOCK, VINYL SIDING, WINDOWS - | RUSS COUPEL - 272-7877 |
| RUSTY REED - 275-2945 | STUCCO & EIFS MATERIAL - JIMMY HUBBARD - 275-5315 |
| FIREPLACE ACCESSORIES & STONE - BILLY SANDLIN - 272-9545 | RESIDENTIAL CABINET DIVISION - DON MAHAN - 275-5315 |
| RESIDENTIAL INSULATION, K-13 & FIREPROOFING - | COMMERCIAL CABINET & MILLWORKS - |
| NATHAN SELDERS - 272-9545 | STACY DIAL - 275-8853 |
| CULTURED MARBLE TOPS, SHOWERS & TUBS - | METAL STUDS & DRYWALL - STEVE DELAUNE - 275-3440 |
| LORETTA STEWART - 272-7500 | |